



12x20 Run in Shed

Call toll-free: 1.866.297.3760

Picture this attractive run-in shed out in your green rolling pasture. Now sit back and realize the practicality of this particular model. With a solid kick plate around the whole interior, this is a sturdy enough building for all of your livestock needs. Interested in saving money? This particular shed was designed to be dragged from pasture to pasture when you rotate your fields. You may even opt to section off part of this shed and make it a tack room, complete with a wood floor.

Locate the shed on a site with good drainage so the horses do not stand in muck and dirty water. Avoid placing the shed in a low spot or at the bottom of a hill where water can accumulate. Place the shed so the open side is opposite the direction from prevailing winds, to provide shelter against cold arctic winds. Situate the shed out in the open, not under large trees that could be toppled by winds or ice.

Consider approaching the shed with a vehicle; place it in an easy and convenient location so feed, a farrier or a veterinarian may access the site. Footing inside the shed should be dry and cleanable. We recommend the building sit on a level 14x22 compacted crushed stone base 3 - 4 inches deep. Once the building is in place, lay rubber matting on top of the stone and add a bed of wood shavings, straw, or saw dust.

Specifications:

Square Footage: 240 sq/ft

Overall Dimensions: 10'6" H x 13'2" W x 21'2"

Recommended Foundation: 6"-8" of crushed gravel

Floor: 6x6 Treated Sill
No floor system

Walls: 80" Front Wall 64" Height Rear Wall Height
4x4 Post and Beam Wall Framing
Solid 36" Kick plate around interior

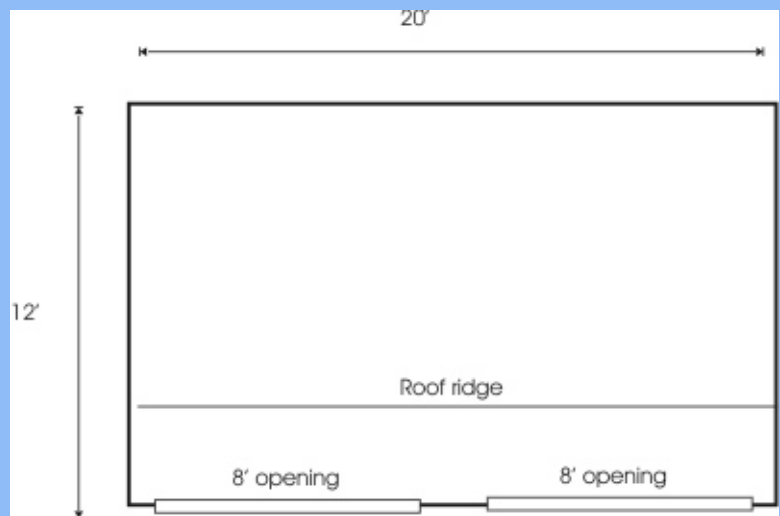
Doors: One Two 8' wide openings

Roof: 2x6 Rafters 24" on center
8/12 Front roof pitch 6/12 rear roof pitch
1x4 Strapping 20" on center
Roofing Corrugated Evergreen Metal 29 gage

Siding: 1" Pine Board & Batten

Trim: 2" Front & Gable Fascia & Shadow
1" Rear Fascia & Shadow, corner & door trim

Overall Weight: 5200 lbs



Plans \$50.00

Jamaica Cottage Shop, Inc. engineered the plans for our designs to do-it-yourself homeowners. The detailed plans include foundation options, a shopping list, and a color coded cut list. The trigonometry of the roof triangles has all been simplified with tracing the cut out roof templates. The plans are set for full dimensional lumber and provide a clear step-by-step path.

Fully Assembled \$5,545

Fully assembled from native rough sawn lumber here at our manufacturing facility, this design is delivered to your client prepared, truck accessible site in one piece. The building is set and leveled by our delivery crew and ready to use when we leave your site. Due to road restrictions, fully assembled models are available in the northeastern United States only.