



14 x 20 Camping Cabin

Call toll-free: 1.866.297.3760

This cozy cabin is the perfect solution for your isolated New England property. An enchanting three-room cottage, complete with a bathroom is a wonderful place to relax and escape from the hustle and bustle of everyday life. The kitchen is equipped with a gray water sink and built in counter and cabinet space. The 12" wood stove and the wall mounted propane heater allows this cabin to remain a place of comfort even in the cold New England winters. The building also comes equipped with a solar panel camping package which allows this cottage to be completely self sufficient.

Hand made in Vermont, from native rough sawn hemlock and pine lumber, this cottage is delivered fully assembled to your prepared site. Rugged post and beam techniques, passed down through the centuries, are used to construct this sturdy picturesque retreat, reminiscent of old New England. Have your own Vermont cabin in the woods!

Furniture is not included.

We also offer this camping cabin in it's stripped down form for those of you who would rather complete the interior of your cottage yourself.

Specifications:

Square Footage: 280 sq ft

Overall Dimensions: 14' x 20' x 10' 6"

Recommended Foundation: 6"-12" crushed gravel - Overall height: 10' 6"

Floor: Four 4x6x14 hemlock skids; 2x6 hemlock floor framing 24" on-center; 2x6 T&G interior floor; 12x14 Living Area; 8x11 Bedroom; 3x8 Bathroom; Overall dimensions 14x20

Walls: 2x4 Hemlock 24" on center

Doors: One nine-lite thermopane steel door; Two Pine 2-8 interior four panel doors

Windows: Four 3x3 Thermopane double hung windows; One 2x3 Thermopane double hung window; All windows include screens

Roof: 2x6 rafters 24" on center; 1x4 strapping 20" on center; 5/12 pitch gable roof; matching overhang, 6" on all 4 sides; Green corrugated metal roofing

Siding: 1" thick board and batten siding; 1" rough sawn pine trim for corner boards; 2" rough sawn pine trim includes fascia, and shadow boards, no soffit

Interior Sheathing: 1x8 shiplapped Pine, smooth side out, for walls and roof

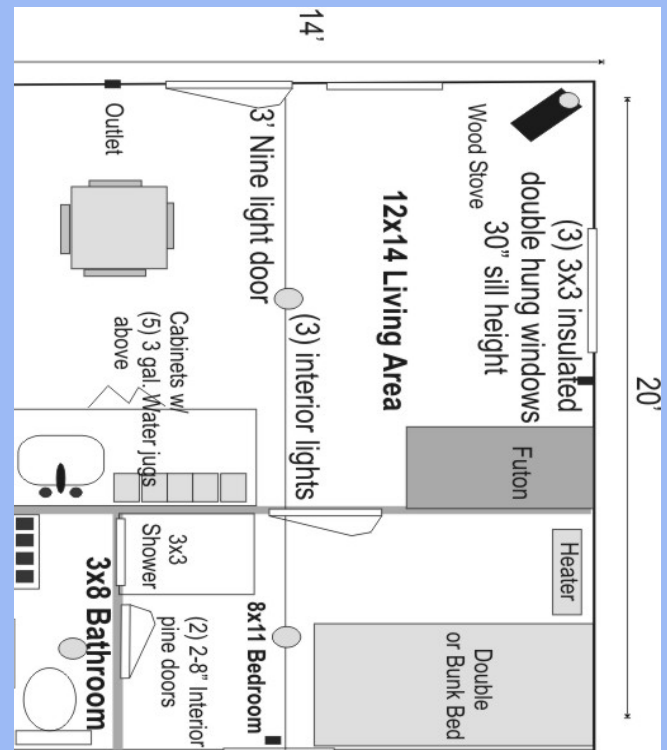
Insulation: 5 1/2" Fiberglass R-19 insulation for floor and roof; 3 1/2" Fiberglass R-11 insulation for walls; Vapor barrier for roof, walls, and floor

Plumbing: Gray water system sink; 3x3 gray water system shower; Envirolet composting toilet

Electric: Solar power panel camp package; Hardwired smoke detector with battery back up; Three outlets; Three energy efficient low wattage light bulbs w/pull chain

Heating: 6" stovepipe thimble through roof; 12" wood stove with window; Propane wall mounted heater

Storage: 6' ln.ft. Pine 30" workbench w/ shelf above and cabinets below; 1' wide x 3' long smooth pine bench w/fliptop lid - battery back up storage area



Plans \$50.00

Jamaica Cottage Shop, Inc. engineered the plans for our designs to do-it-yourself homeowners. The detailed plans include foundation options, a shopping list, and a color coded cut list. The trigonometry of the roof triangles has all been simplified with tracing the cut out roof templates. The plans are set for full dimensional lumber and provide a clear step-by-step path.

Fully Assembled \$21,897

Cabin will be delivered, fully assembled by our in house delivery crew. Due to road restrictions, the Cabin is only available in Northern New England. Contact our client care team to find out if this rustic retreat can be delivered to your property.