



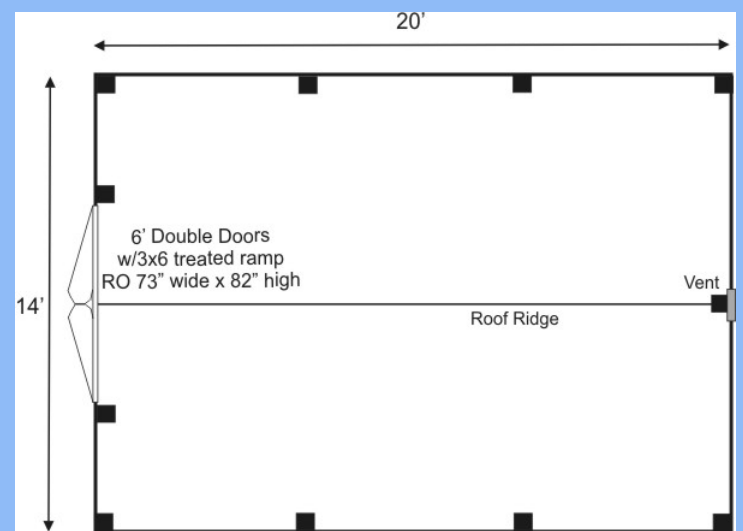
14 x 20 Barn

Call toll-free: 1.866.297.3760

With 280 square feet of usable space this barn has a huge interior. The 6'0" JCS-built double doors are large enough to fit your riding lawn mower, snowmobile, snow blower, lawn furniture, and ATVs. The building can be used as a garage since the floor system can handle a small to mid-size car or tractor. The open floor plan allows for a great workshop space or can be split up and be used as a cabin.

Hand made in Vermont, from native rough sawn hemlock and pine lumber, the pre-cut kit package includes all fastening hardware, metal roofing and step-by-step plans. Rugged post and beam techniques passed down through the centuries are being applied to pre-cut and notch this barn kit into a sturdy picturesque outbuilding reminiscent of old New England.

The 14x20 Barn Pre-Cut Kit will be delivered curbside by common carrier. It is recommended to have helpers on hand to unload. Basic carpentry tools are required; the kit is geared towards novice/beginner carpentry skills. Technical support is provided via our toll free support line. Assembly time is approximately two people twenty-eight hours. Step-by-step plans may be purchased separately which include a material shopping list to provide your own rough cut lumber. The cottage kit in the picture has been client modified to include two translucent roofing panels, horizontal pine clapboard siding, a 2x2 window and painted white.



Specifications:

Foundation Recommendation: 6"-8" Crushed Stone

Overall Dimensions: 14'6" wide x 10' 6" high x 20'6" long

Floor: Two 6x6x20' Hemlock Skids
2x6 Hemlock Floor Framing 24" on center
3/4" CDX Plywood Interior Floor

Walls: 4x4 Post and Beam Wall Framing
4x4 Angles Braces
70" Wall Height

Doors: 6' JCS-Built Double Doors with 3x6 Treated Ramp

Roof: 2x6 Rafters 24" on center
1x6 Rough Hemlock Collar Ties
1x4 Strapping 20" on center
5/12 Pitch Gable Roof
Green Corrugated Metal Roofing

Siding: 1" Pine Board and Batten Siding
1" Rough Sawn Pine Trim includes Corner Boards, Fascia, No Soffit

Wood Louvered Vent in Rear Gable

Kit Weight: 6,800 lbs
Shipping Cube Size: 44" W x 48" H x 168" L
Assembly Time: Two people 28 hours.



Plans \$50.00

Jamaica Cottage Shop, Inc. engineered the plans for our designs to do-it-yourself homeowners. The detailed plans include foundation options, a shopping list, and a color coded cut list. The trigonometry of the roof triangles has all been simplified with tracing the cut out roof templates. The plans are set for full dimensional lumber and provide a clear step-by-step path.

Complete Kit \$7,824

The rough sawn native Vermont lumber package has all the pieces cut and ready for assembly. It includes a cut and notched hemlock post and beam frame and pre cut pine siding. The fasteners, hardware, windows, and doors are included as well as the step by step plans. The kit is geared to a do-it-yourself homeowner with beginner knowledge of carpentry.